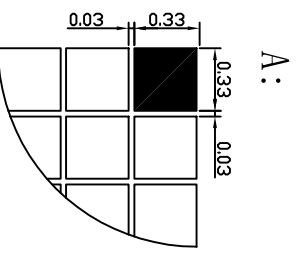
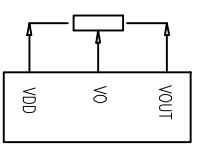
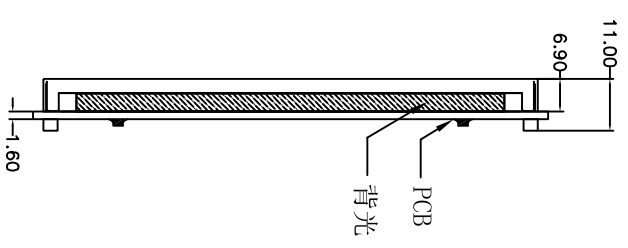
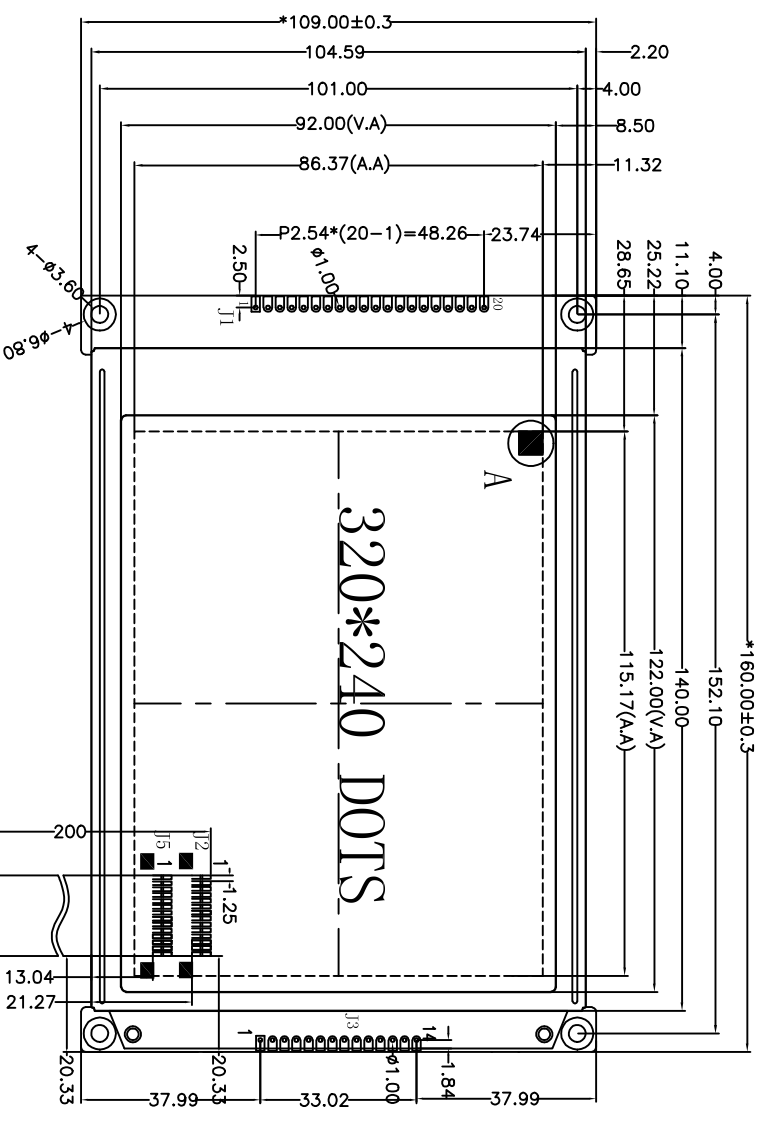


Customer approval :



接口选择使用, FPC选择使用

PIN	1	2	3	4	5	6	7	8	9	10
CONNECTION	GND	VCC	V0	/MR	/RD	/CS	A0	/RST	DB0	DB1
PIN	11	12	13	14	15	16	17	18	19	20
CONNECTION	DB2	DB3	DB4	DB5	DB6	DB7	BLA	VOUT	BLA	BLK

J2		J3		J5	
PIN	CONNECTION	PIN	CONNECTION	PIN	CONNECTION
1	D0	1	D0	1	FLM
2	D1	2	D1	2	LP
3	D2	3	D2	3	CP
4	D3	4	D3	4	M
5	DISP	5	DISP	5	VO
6	FLM	6	FLM	6	VCC
7	M	7	M	7	GND
8	LP	8	LP	8	VOUT
9	CP	9	CP	9	DO
10	VCC	10	VCC	10	D1
11	GND	11	GND	11	D2
12	VOUT	12	VOUT	12	D3
13	VO	13	VO	13	DISP
14	BLA/FGND	14	BLA/FGND	14	NC

SPECIFICATION:

- Driving: Duty:1/240, Bias:1/17, VOUT:-21.5V, V0:-18.5V, VDD:5V
- VIEWING DIRECTION: 6 O'CLOCK
- Display mode: STN/Negative/Transmissive/Blue
- Operating temp.: -20° C~+70° C
- Storage temp.: -30° C~+80° C
- Control IC: RA8835P3N-NE
- BACKLIGHT Type: White 5V 160ma
- DIMENSIONS WITH MARK "\*" ARE IMPORTANT WITH MARK "()" ARE REFERENCED
- All the raw materials are RoHS compliant

REV	REVISION RECORD	DATE
A0	First issue	03/15

**深圳市三元晶科技有限公司**  
 ShenZhen TCC LCD Hi-Tech Co., Ltd.

MODEL NO.	APPROVED BY	CHECKED BY	DRAWING BY	GENERAL TOL: ± 0.3
模组型号	Liu	Francis	Luoxian	本 注 单
SWM320240B8V32-5C2BLN3R8	2012/03/15	2012/03/15	2012/03/15	PAGE:1 OF 1
				UNIT: mm
				PROJECTION 三角法